

# INSTRUCTIONAL MODELS

21 April - 15 May 2009



Open Spatial  
Workshop & Anna  
Muirhead  
CLUBStennis 2007-9

*Instructional Models* is a propositional exhibition instigated by Terri Bird and Julie Davies, in Melbourne, and facilitated by Neil Emmerson, in Dunedin. The premise for this project involves artists in Melbourne associated with the artist-run initiatives Ocular Lab and Clubsproject inc, with whom Bird and Davies have worked previously, being engaged in an exchanged based project with artists in Dunedin.

The Melbourne based artists have sent a series of instructions for potential artworks that invite responses which can be followed, or a set parameters within which actions are carried out. For example, Anna Muirhead has restaged Open Spatial Workshop's *CLUBStennis*; an experimental event utilizing the force of a tennis ball machine catapulting tennis balls off the

walls/floors/ceilings of Blue Oyster as a spatial articulation of its volumes of air. Max Oetli and Inge Flinte have responded to Terri Bird's invitation for another blind date by taking photos of 'the same thing' as the six images she has sent. Victoria Bell and Lee Houlihan have used the gardens of 'Brash Cottage' to record a collection of urban plant life for Julie Davies botanical data collection 'garden ware'.

The *Instructional Models* exhibition comprises of the accumulated results of these interpretations, exchanges and responses.

The use of ideas around exchange is an important element in the discourse of Ocular Lab, and the premise contributed to numerous projects in the program at

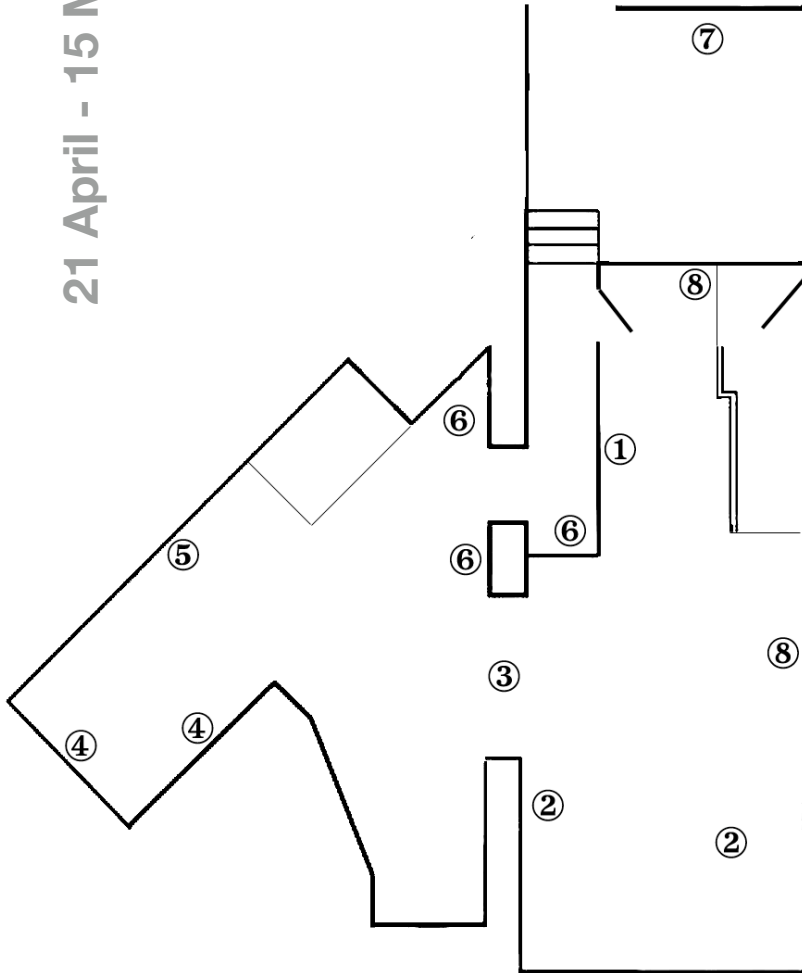
Clubsproject inc. Expanding on these past activities, the portability of this project facilitates an exchange of practices between artists and dialogue around approaches to practice.

As part of this exchange the proposals are purposefully open to interpretation with the potential for re-orientation, re-ordering or rejection.

This exhibition involves a number of artists from the Otago Polytechnic School of Art and is timed to coincide with the Aotearoa New Zealand Arts Educators Conference, hosted by the School of Art.



21 April - 15 May 2009



## Melbourne Artists | Dunedin Artists

- |                                   |   |
|-----------------------------------|---|
| ① Sally Mannall                   | Bibiana Guevara-Hunter +<br>Christine Keller +<br>Alex Lovell-Smith +<br>Karen Taiaroa-Smithies |
| ② Open Spatial<br>Workshop        | Anna Muirhead   |
| ③ Raafat Ishak +<br>Tom Nicholson | Ali Bramwell +<br>Lars Preisser   |
| ④ Terri Bird                      | Inge Flint + Max Oetti  |
| ⑤ Julie Davies                    | Victoria Bell +<br>Lee Houlihan   |
| ⑥ Alex Rizkalla                   | Clare Fleming +<br>Rohana Weaver  |
| ⑦ Nikos Pantazis                  | Max Bellamy +<br>Sophie Black +<br>Peter Gorman   |
| ⑧ Proposals                       |   |

## Unrealised Projects

Sean Loughrey  
Jonathan Luker  
Spiros Panigirakis  
Fleur Summers

With thanks to all the artists and volunteers involved.

