



THE STORY OF THE ANALOGUE CHAIR

Empiricism is based on observation. The chair is covered in eyes to collect information. The eyes have evolved from pagan eye beads, which warded off the unknown as malevolent.

But the empirical eyes gather and absorb information indiscriminately.

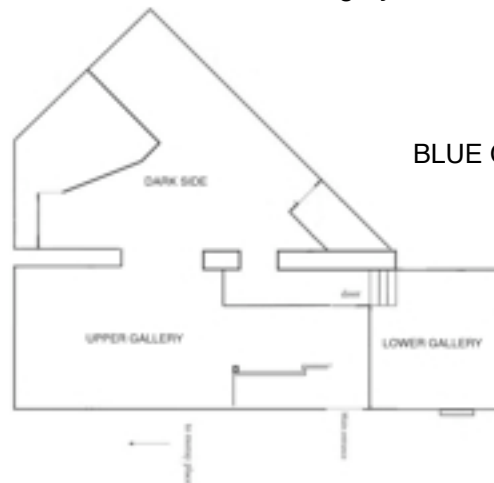
As the chair struggles to contain more and more information it becomes ungainly and bloated and tries to increase its surface area with extending arms and burrowing inner tubes. It produces seed pods to replicate itself. The eyes multiply to accommodate the stream of information.

This model is a late analogue chair and the work depicts a stressed system at the point of evolution. The frantic blinking eyes of empiricism are about to morph into the unsleeping fibre optic eye of digital storage that is fixed open to a permanent torrent of incoming information, an eye that does not sleep, blink or rest.

THE STORY OF THE DISINTEGRATING CELL CASE

The Cell case film records a digital empirical cell being overloaded with information. More and more cells, stuffed with information, are inserted into the case until the membranes that divide the cells become so brittle that they begin to crumble.

Each item of information loses its integrity and the and the case loses its authority as a container.



BLUE OYSTER GALLERY FLOOR PLAN